

# RAINBERRY P.U.D., PODS A, B, & C REPLAT NO.2

BEING A REPLAT OF POD A, RAINBERRY P.U.D. PODS A,B, & C, ACCORDING TO THE PLAT THEREOF, AS RECORDED IN PLAT BOOK 80, AT PAGE 24 THROUGH 26 INCLUSIVE, TOGETHER WITH A PORTION OF 95TH AVENUE AS SHOWN ON SAID PLAT, PARTIALLY ABANDONED PER OFFICIAL RECORDS BOOK 10856, AT PAGE 1563, REALIGNED PER OFFICIAL RECORDS 12340, AT PAGE 1641, ABANDONED PER OFFICIAL RECORDS BOOK 23005, AT PAGE 1505, BEING AFFECTED BY OFFICIAL RECORDS BOOK 23298, AT PAGE 1880, AND SUBJECT TO THE RECIPROCAL EASEMENT AND OPERATING AGREEMENT RECORDED IN OFFICIAL RECORDS BOOK 24636, PAGE 1084, ALL BEING OF THE PUBLIC RECORDS OF PALM BEACH COUNTY, FLORIDA. SAID LANDS LYING AND SITUATE IN SECTION 19, TOWNSHIP 47 SOUTH, RANGE 42 EAST, PALM BEACH COUNTY, FLORIDA.

140

State of Florida }  
County of Palm Beach } SS

THIS PLAT WAS FILED FOR RECORD AT \_\_\_\_\_ M.

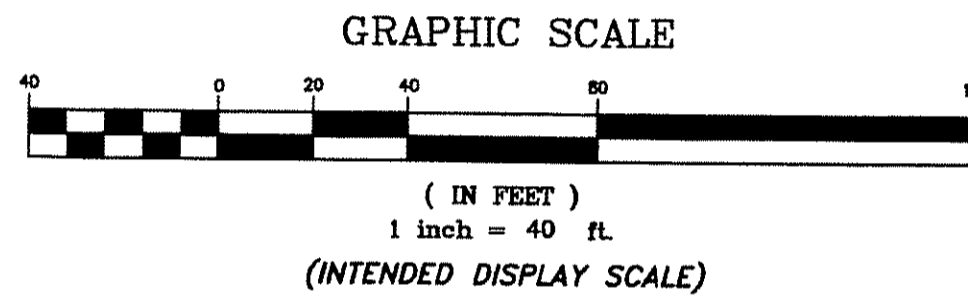
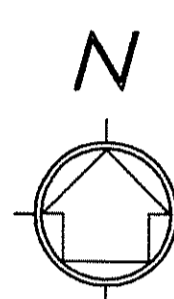
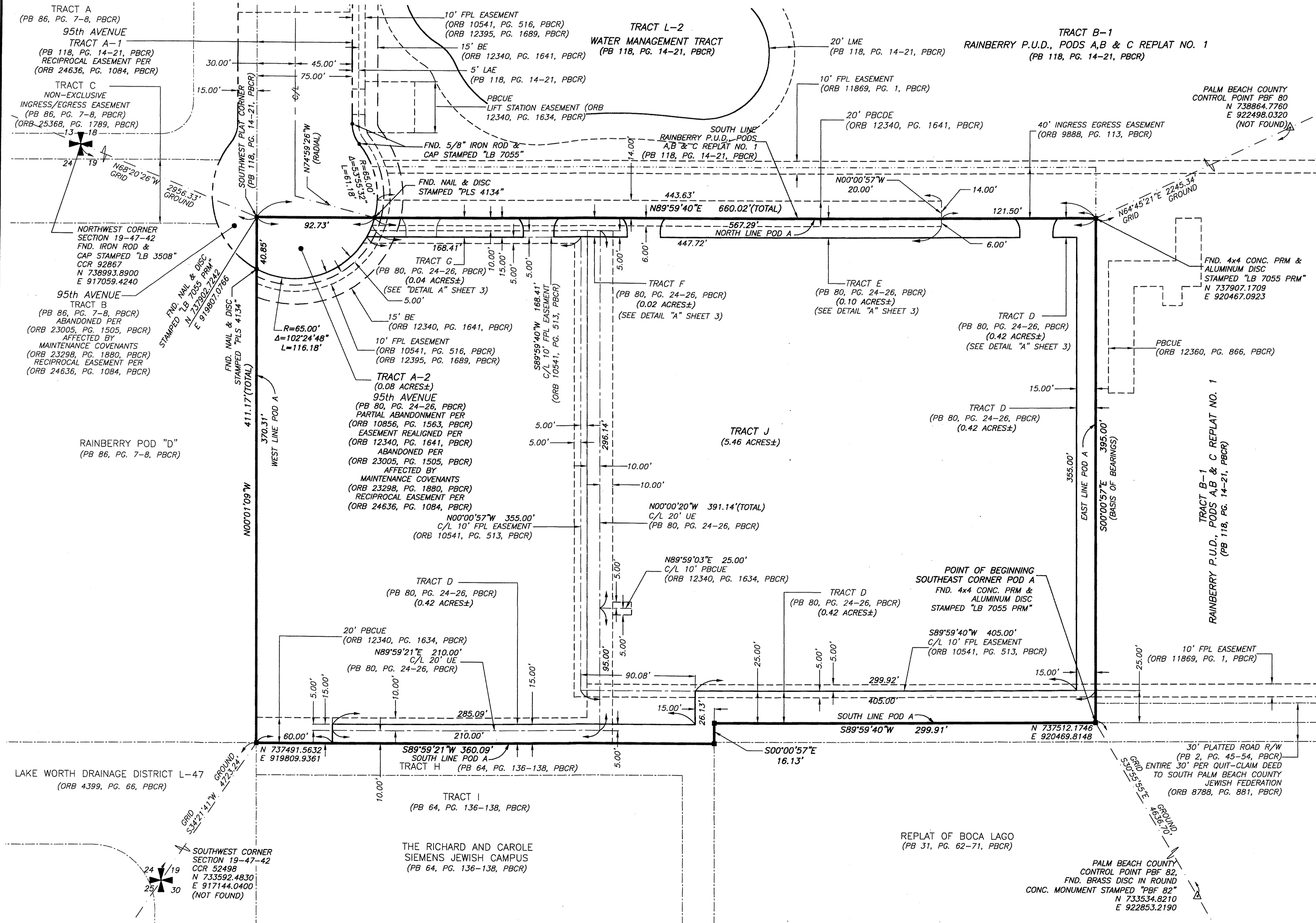
THIS \_\_\_\_\_ DAY OF \_\_\_\_\_ A.D. 2016 AND DULY RECORDED

IN PLAT BOOK \_\_\_\_\_ ON PAGES \_\_\_\_\_ THROUGH \_\_\_\_\_

SHARON R. BOCK  
CLERK AND COMPTROLLER

BY: \_\_\_\_\_  
DEPUTY CLERK

SHEET 2 OF 3 SHEETS



- LEGEND:**
- CCR = CERTIFIED CORNER RECORD
  - BE = BUFFER EASEMENT
  - C/L = CENTER LINE
  - CONC. = CONCRETE
  - Δ = DELTA (CENTRAL ANGLE)
  - DE = DRAINAGE EASEMENT
  - FND. = FOUND
  - FPL = FLORIDA POWER & LIGHT
  - L = LENGTH OF ARC
  - LB = LICENSED BUSINESS
  - LAE = LIMITED ACCESS EASEMENT
  - LME = LAKE MAINTENANCE EASEMENT
  - ORB = OFFICIAL RECORDS BOOK
  - PB = PLAT BOOK
  - PBCR = PALM BEACH COUNTY RECORDS
  - PBCDE = PALM BEACH COUNTY DRAINAGE EASEMENT
  - PBCUE = PALM BEACH COUNTY UTILITY EASEMENT
  - PG. = PAGE
  - PLS = PROFESSIONAL LAND SURVEYOR
  - PRM = PERMANENT REFERENCE MARKER
  - R/W = RIGHT-OF-WAY
  - R = RADIUS
  - UE = UTILITY EASEMENT
  - = SET 4"x4" CONCRETE (PRM) W/ALUMINUM DISC STAMPED "LB 7055 PRM" UNLESS OTHERWISE NOTED.
  - = SET NAIL & BRASS DISC STAMPED "LB 7055 PRM" UNLESS OTHERWISE NOTED

## WGI

Wantman Group, Inc.

Engineering ♦ Planning ♦ Surveying ♦ Environmental  
2035 VISTA PARKWAY, SUITE 100, WEST PALM BEACH, FL 33411  
(888) 909-2220 phone (561) 687-1110 fax  
CERTIFICATE OF AUTHORIZATION No. LB 7055  
ORLANDO - PORT ST. LUCIE - TAMPA  
THIS INSTRUMENT WAS PREPARED BY DEREK G. ZEMAN, P.S.M.  
PROFESSIONAL SURVEYOR AND MAPPER, LICENSE NO. 5655  
FOR THE FIRM: WANTMAN GROUP, INC.